

LED Ground Lights

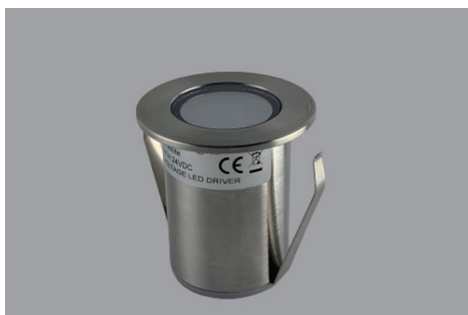
- Stylish and low profile design
- 5 years warranty
- 316 marine grade stainless steel construction, sturdy and robust
- IP68 rated, submersible in water
- 350mA constant current or 12V/24V low voltage supply
- Use original CREE LED chip as light source
- Narrow spot and flood beam angle options
- Available in warm white, neutral white and cool white, red, green, blue, amber and RGB colour changing option
- Supplied without or with transformers / drivers
- DALI & 0-10V dimming options



Deck Mini 23

- 350mA or 12V/24V DC
- 1W, 100lm
- Ra>80
- IP68, IK10
- Complete with 1.1m cable
- Aluminium sleeve available

Model	Watt	Beam Angle	IP	Size	Cutout
G112	1W	20°/60°	IP68	Ø23x40mm	Ø19mm



Deck Mini 36

- 12V/24V DC
- 1W, 20lm
- Ra>80
- IP68, IK10
- Available in stainless steel and antique brass finish
- Complete with 1.1m cable

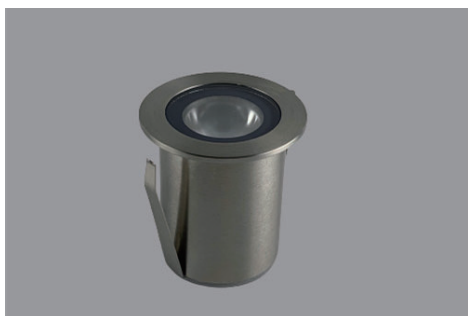
Model	Watt	Beam Angle	IP	Size	Cutout
G118	1W	120°	IP68	Ø36x37mm	Ø29mm



Deck Mini Thread 36

- 12V/24V DC
- 1W, 20lm
- Ra>80
- IP68, IK10
- Available in stainless steel and antique brass finish
- Complete with 1.1m cable

Model	Watt	Beam Angle	IP	Size	Cutout
G118T	1W	120°	IP68	Ø36x37mm	Ø29mm

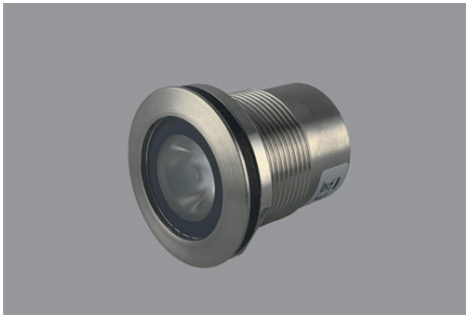


Deck Mini 40

- 350mA or 12V/24V DC
- 1W, 100lm
- Ra>80
- IP68, IK10
- Available in stainless steel and antique brass finish
- Complete with 1.1m cable
- Available in round and square bezel

Model	Watt	Beam Angle	IP	Size	Cutout
G119	1W	20°/60°	IP68	Ø40x40mm	Ø33mm

LED Ground Lights



Deck Mini Thread 40

- 350mA or 12V/24V DC
- 1W, 100lm
- Ra>80
- IP68, IK10
- Available in stainless steel and antique brass finish
- Complete with 1.1m cable

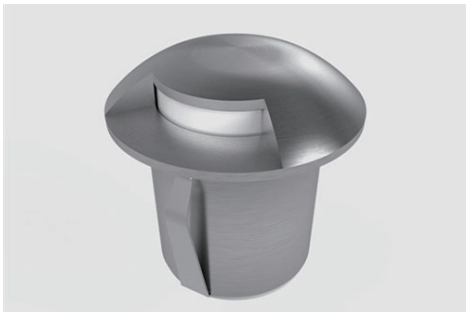
Model	Watt	Beam Angle	IP	Size	Cutout
G119T	1W	20°/60°	IP68	Ø40x40mm	Ø33mm



Step Mini 40

- 350mA or 12V/24V DC
- 1W, 100lm
- Ra>80
- IP68, IK10
- Complete with 1.1m cable

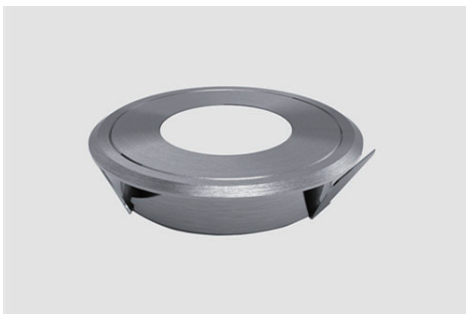
Model	Watt	Beam Angle	IP	Size	Cutout
G118	1W	20°/60°	IP68	Ø41.5x40mm	Ø33mm



Deck Directional 44

- 350mA or 12V/24V DC
- 1W, 100lm
- Ra>80
- IP68, IK10
- Available in one, two and three ways
- Complete with 1.1m cable

Model	Watt	Beam Angle	IP	Size	Cutout
G191/G192/G193	1W	N/A	IP68	Ø44x43mm	Ø32mm

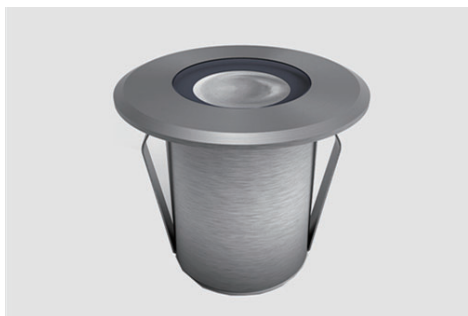


Deck Mini 45

- 12mm low profile
- 350mA or 12V/24V DC
- 1W, 100lm
- Ra>80
- IP68, IK10
- Complete with 1.1m cable

Model	Watt	Beam Angle	IP	Size	Cutout
G108	1W	20°/60°	IP68	Ø45x12mm	Ø38mm

LED Ground Lights



Deck 50

- 42mm low profile
- 350mA or 12V/24V DC
- 1W, 100lm
- Ra>80
- IP68, IK10
- Complete with 1.1m cable

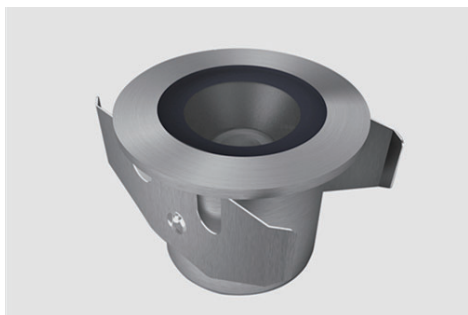
Model	Watt	Beam Angle	IP	Size	Cutout
G129	1W	20°/60°	IP68	Ø50x42mm	Ø33mm



Deck 60

- 45mm low profile
- 350mA or 12V/24V DC
- 1W, 100lm
- Ra>80
- IP68, IK10
- Complete with 3m cable
- Available in round and square bezel

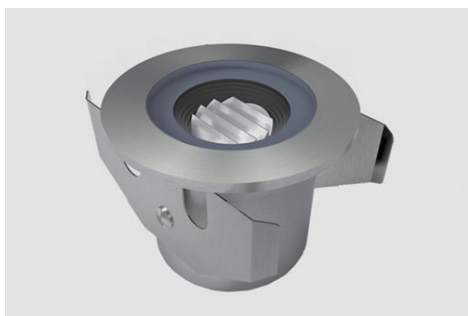
Model	Watt	Beam Angle	IP	Size	Cutout
G116	1W	12°/45°	IP68	Ø60x45mm	Ø50mm



Deck 60 Baffle

- 45mm low profile
- 350mA or 12V/24V DC
- 1W, 100lm
- Ra>80
- IP68, IK10
- Available in one, two and three ways
- Complete with 3m cable

Model	Watt	Beam Angle	IP	Size	Cutout
G116H	1W	12°/45°	IP68	Ø60x45mm	Ø50mm



Deck Mini 45

- 45mm low profile
- 350mA or 12V/24V DC
- 1W, 100lm
- Ra>80
- IP68, IK10
- Complete with 1.1m cable

Model	Watt	Beam Angle	IP	Size	Cutout
G116Q	1W	25×40°/20×50°	IP68	Ø60x45mm	Ø50mm

LED Ground Lights



Deck 60 3W

- 50mm low profile
- 350mA or 12V/24V DC
- 3x1W, 220lm
- Ra>80
- IP67
- Complete with 1.1m cable
- Available in stainless steel and black finish

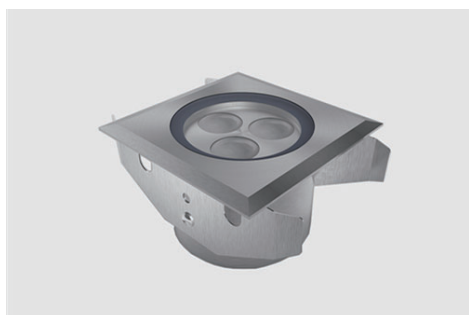
Model	Watt	Beam Angle	IP	Size	Cutout
G117	3W	10°/20°/45°/60°	IP67	Ø60x50mm	Ø50mm



Deck 76 Spot

- 47mm low profile
- 350mA or 12V/24V DC
- 3x1W, 300lm
- Ra>80
- IP68, IK10
- Complete with 3m cable
- Available in round and square bezel
- Available in mono and RGB color

Model	Watt	Beam Angle	IP	Size	Cutout
G140	3W	10°/20°/30°/45°/60°	IP68	Ø76x47mm	Ø65mm



Deck Square 76 Spot

- 47mm low profile
- 350mA or 12V/24V DC
- 3x1W, 300lm
- Ra>80
- IP68, IK10
- Complete with 3m cable
- Available in round and square bezel
- Available in mono and RGB color

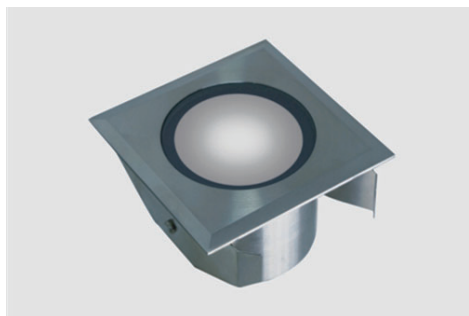
Model	Watt	Beam Angle	IP	Size	Cutout
G140SQ	3W	20°/60°	IP68	76x76x47mm	Ø65mm



Deck 76 Flood

- 47mm low profile
- 350mA or 12V/24V DC
- 3x1W, 300lm
- Ra>80
- IP68, IK10
- Complete with 3m cable
- Available in round and square bezel
- Available in mono and RGB color

Model	Watt	Beam Angle	IP	Size	Cutout
G150	1W	120°	IP68	Ø76x47mm	Ø65mm



Deck Square 76 Flood

- 47mm low profile
- 350mA or 12V/24V DC
- 3x1W, 300lm
- Ra>80
- IP68, IK10
- Complete with 3m cable
- Available in round and square bezel
- Available in mono and RGB color

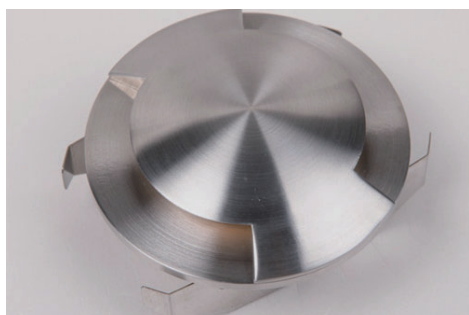
Model	Watt	Beam Angle	IP	Size	Cutout
G150SQ	1W	120°	IP68	76x76x47mm	Ø65mm



Deck 88 One

- 45mm low profile
- 350mA or 12V/24V DC
- 3x1W
- Ra>80
- IP68, IK10
- Complete with 3m cable

Model	Watt	Beam Angle	IP	Size	Cutout
G151	3x1W	N/A	IP68	Ø88x45mm	Ø65mm



Deck 88 Two

- 45mm low profile
- 350mA or 12V/24V DC
- 3x1W
- Ra>80
- IP68, IK10
- Complete with 3m cable

Model	Watt	Beam Angle	IP	Size	Cutout
G152	3x1W	N/A	IP68	Ø88x45mm	Ø65mm



Deck 88 Four

- 45mm low profile
- 350mA or 12V/24V DC
- 3x1W
- Ra>80
- IP68, IK10
- Complete with 3m cable

Model	Watt	Beam Angle	IP	Size	Cutout
G154w	3x1W	N/A	IP68	Ø88x45mm	Ø65mm